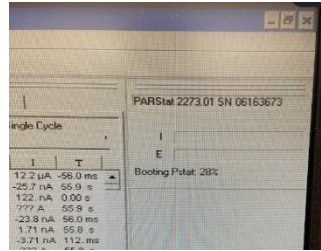


Step-by-step user guide for using *PowerSuite* software



Software used

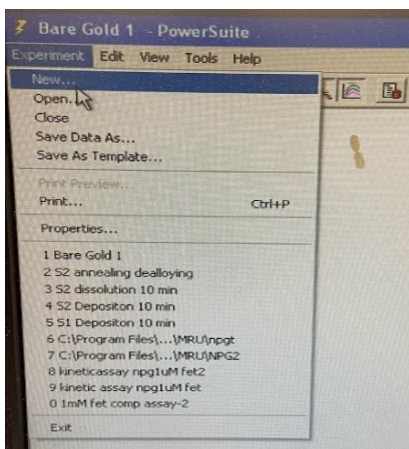


Let the Booting complete to 100%

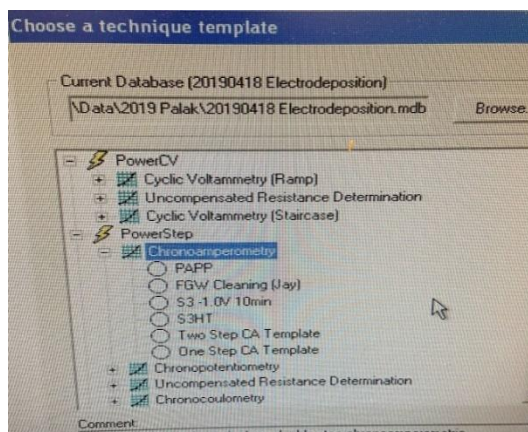
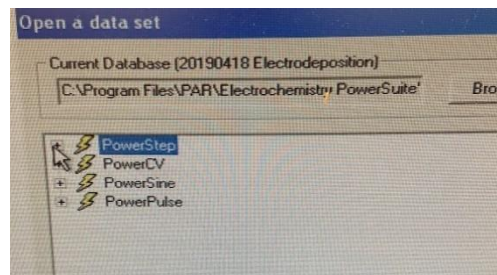


Click on the experiment

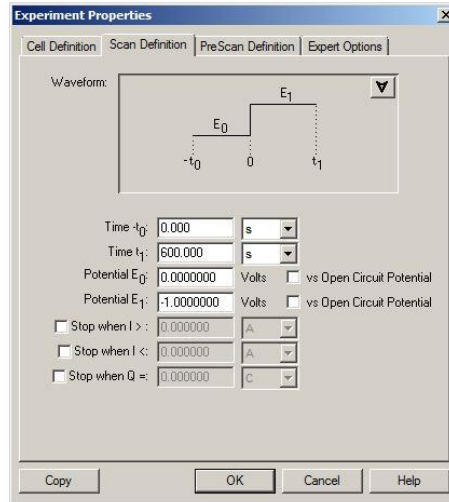
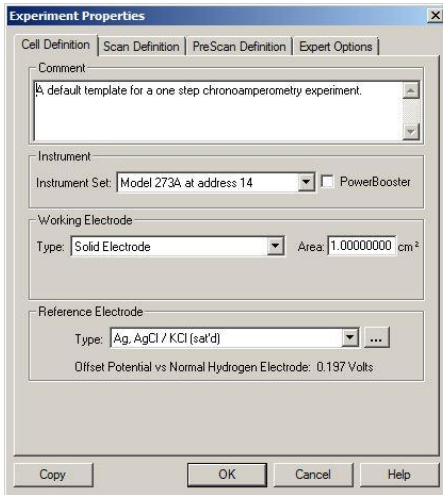
Select "New"



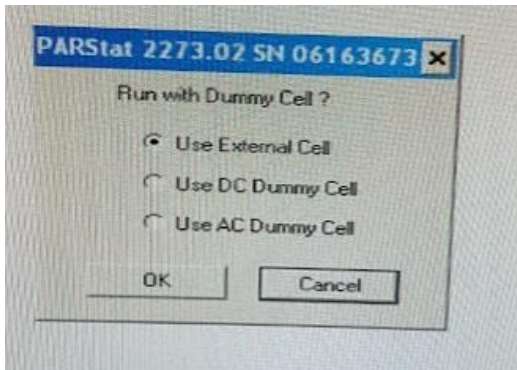
From the given set of options select the "Power step" program



Choose the technique template "Chronoamperometry"



After clicking on “Chronoamperometry” press “next” and select the electrode type in cell definition under “reference electrode”. Moving on to the next option of scan definition, input all the parameters.

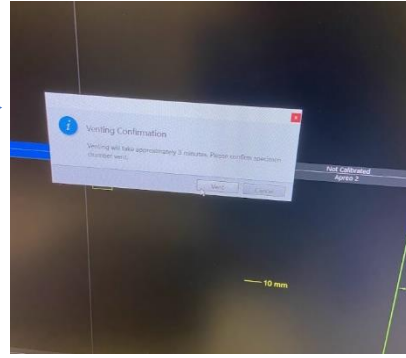
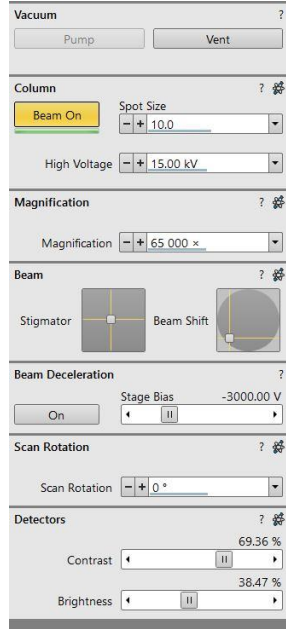


After clicking on “OK” the software shows various options of cell types. Select “use external cell”.

Step-by-step user guide for using *XT Microscope* software

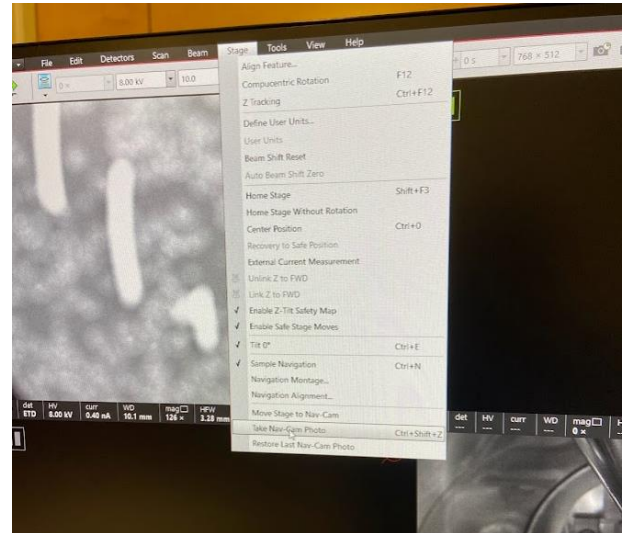


Software used



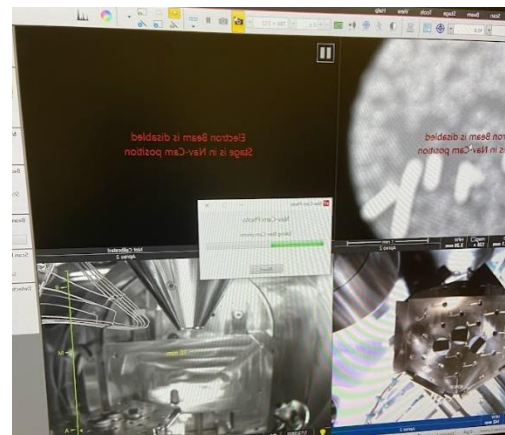
After the completing of this step turn the beam on.

After clicking on XT software press start button. When the icons appear press Vent. It takes 3 min to complete the process



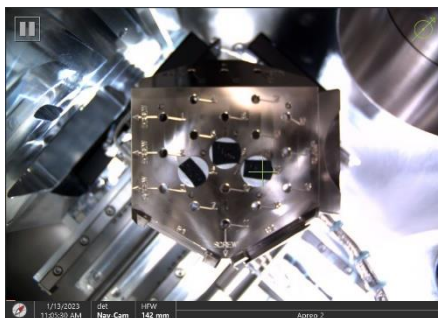
Click on Stage button and select "turn nav cam photo"

The current view of the sample is seen after that





Before taking the images, the Z axis has to be linked at 10 mm distance and focused well



The view inside the chamber showing the samples in one window screen and the stage with samples and EDS detector inside the cage like structure on the other screen



The color SEM logo is shown in the icons. Next to it is the elemental analysis icon for doing EDS